

ENOCH TOWN PLAT

NW 1/4 of Section 14, Township 35 South, Range 11 West, SLM.

GEOTECHNICAL SOIL REPORT

THE FOLLOWING GEOTECHNICAL SOILS REPORTS ARE ON FILE WITH ENDOCH CITY OFFICE AT 900 E. MIDVALLEY ROAD, ENDOCH, UTAH 84720.
 1. GEOTECHNICAL REPORT PHASE 3, THREE PEAKS SUBDIVISION
 PREPARED BY GEM ENGINEERING, INC. DATED JUNE 21, 2006.

3 PEAKS SUBDIVISION, PHASE 2

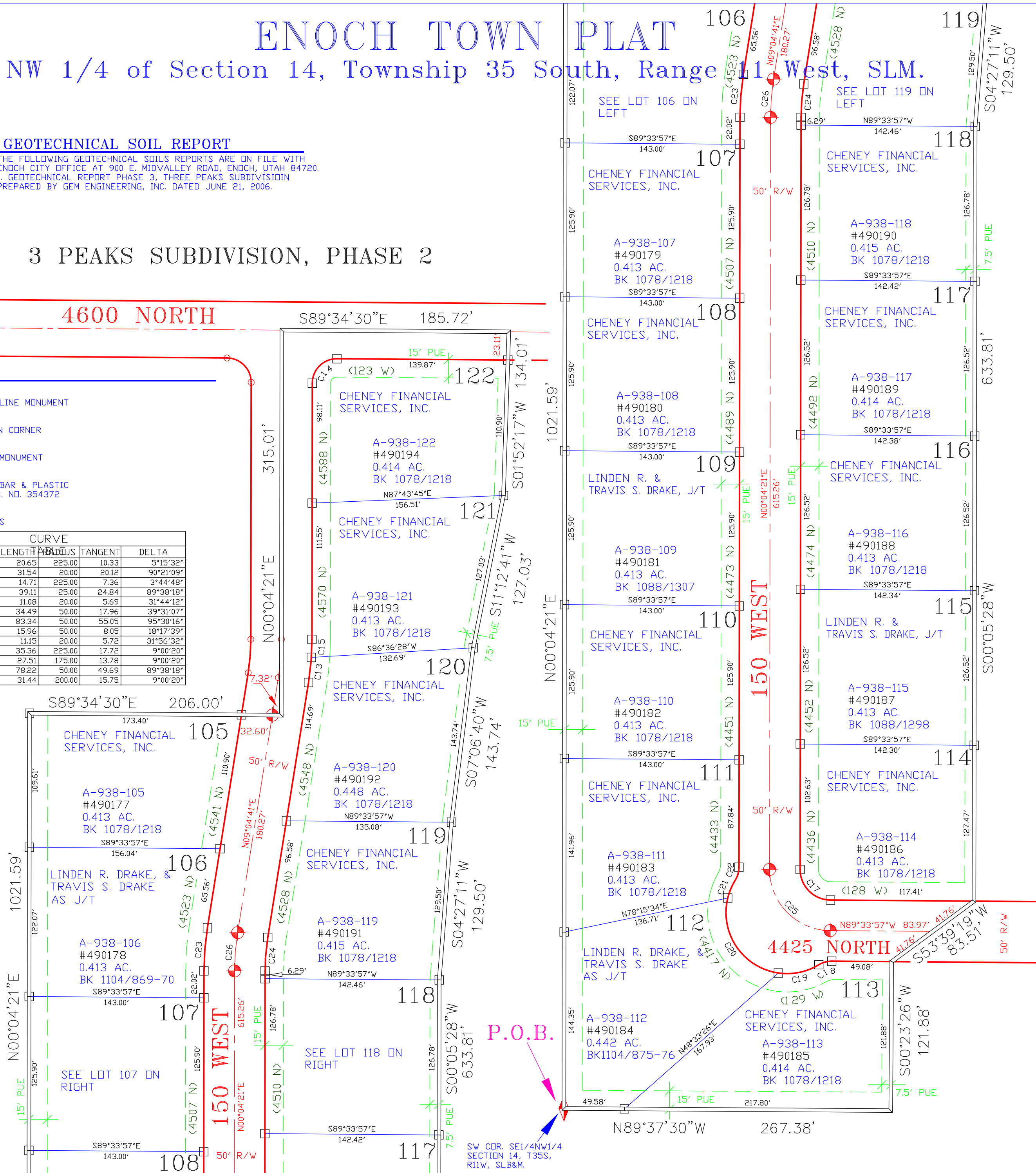
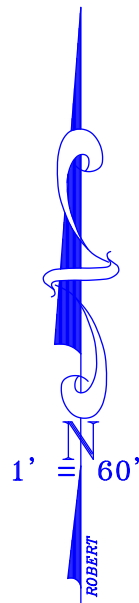
4600 NORTH

LEGEND:

- CENTERLINE MONUMENT
- SECTION CORNER
- FOUND MONUMENT
- SET REBAR & PLASTIC CAP L.S. NO. 354372

(4474 N) ADDRESS

CURVE				
CURVE	LENGTH	RADIUS	TANGENT	DELTA
C13	20.65	225.00	10.33	5°15'32"
C14	31.54	20.00	20.12	90°21'09"
C15	14.71	225.00	7.36	3°44'48"
C17	39.11	25.00	24.84	89°38'18"
C18	11.08	20.00	5.69	31°44'12"
C19	34.49	50.00	17.96	39°31'07"
C20	83.34	50.00	55.05	95°30'16"
C21	15.96	50.00	8.05	18°17'39"
C22	11.15	20.00	5.72	31°56'32"
C23	35.36	225.00	17.72	9°00'20"
C24	27.51	175.00	13.78	9°00'20"
C25	78.22	50.00	49.69	89°38'18"
C26	31.44	200.00	15.75	9°00'20"



3 PEAKS SUBDIVISION, PHASE 3

SW COR. SE1/4NW1/4 SECTION 14, T35S, R11W, SLB&M.